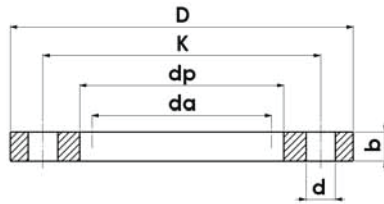




**SDR17 / DIN 2501 ST 37-ST 44**  
PP Covered Steel Flange PN 10 (%30 Fiber Glass)



Standard: TS ISO 7005-1 • TS EN 1092-1 + A1

Steel Nominal Diameter	PE Nominal Diameter	Inner Diameter	PC Distance	Outside Diameter	Hole Diameter	Flange Thickness	Hole Qty	Weight (kg)
DN	da(mm)	dp(mm)	K(mm)	D(mm)	d(mm)	b(mm)		
200	200	235	295	340	22	26	8	3,600
200	225	235	295	340	22	26	8	3,600
250	250	288	350	395	22	29	12	4,600
250	280	294	350	395	22	29	12	4,200
300	315	338	400	445	22	29	12	5,500
350	355	376	460	514	22	38	16	14,650
400	400	430	515	571	26	40	16	17,250
450	450	465	565	615	26	40	20	21,550
500	500	533	620	670	26	40	20	23,500
600	560	618	725	788	30	43	20	32,500
600	630	645	725	788	30	43	20	33,300

