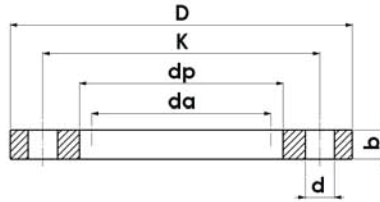




**SDR11 / DIN 2501 ST 37-ST 44**

PP Covered Steel Flange PN 16 (%30 Fiber Glass)



Standard: TS ISO 7005-1 • TS EN 1092-1 + A1

Steel Nominal Diameter	PE Nominal Diameter	Inner Diameter	PC Distance	Outside Diameter	Hole Diameter	Flange Thickness	Hole Qty	Weight (kg)
DN	da(mm)	dp(mm)	K(mm)	D(mm)	d(mm)	b(mm)		
(*15	20	29	65	95	14	15	4	0,625
(*20	25	34	75	102	14	15	4	0,720
25	32	42	85	115	14	16	4	0,405
32	40	51	100	140	18	16	4	0,590
40	50	62	110	150	18	16	4	0,660
50	63	78	125	165	18	18	4	0,880
65	75	92	145	185	18	18	4	1,500
80	90	108	160	200	18	20	8	1,565
100	110	125	180	220	18	20	8	1,700
100	125	135	180	220	18	20	8	1,380
125	140	158	210	250	18	22	8	1,950
150	160	178	240	285	22	22	8	3,000
150	180	188	240	285	22	22	8	2,250
200	200	235	295	340	22	26	12	4,350
200	225	235	295	340	22	26	12	4,350
250	250	288	355	405	26	29	12	5,050
250	280	294	355	405	26	29	12	4,750
300	315	338	410	460	26	31	12	6,650
350	355	376	470	532	26	40	16	19,500
400	400	430	525	592	30	43	16	25,000
450	450	465	585	640	30	45	20	32,650
500	500	533	650	715	33	45	20	35,750
600	560	618	770	840	36	48	20	57,700
600	630	645	770	840	36	48	20	50,000